

MINNESOTA VALLEY CO-OP NEWS

Volume 76 No. 5 • May 2014



MANAGER'S MESSAGE • PAT CARRUTH

General Manager

Air Conditioning Season

Summer is right around the corner and with it comes the air conditioning season. If you do run into some problems with your current air conditioner, consider an air source heat pump as your replacement. Not only will it air condition, it will efficiently provide heat in the winter and you can run it on our reduced electric heat rate. Talk to the people in the Member Services Department for all the details including special rebates for this air conditioning season.

New Drying Setup or Shop

If this is the fall you will be putting in a heavier drying system, you might want to give us a call soon. We like to have as much lead time as we can get so we have what we need to get taken care of by the time you need to dry corn. Also, if you are putting a new shop up, be sure and talk to our Member Services people who have some good ideas for lighting, heating and cooling.

Capital Credit Allocation Information

Your capital credit allocation from the business year 2013 will be listed on your power bill. This number represents your individual share of our \$2,224,648 margin this past year. If the cooperative continues to be successful, and there is no reason to believe otherwise, it will all eventually be returned to you in cash. Next year, we will be retiring from the business year 2001, which puts us presently at about a 13 to 14 year rotation. Have a great summer!

Minnesota Valley
will be closed
on Monday,
May 26th in
observance of
Memorial Day

Electrical Safety Prevents Injuries and Saves Lives

To celebrate **National Electrical Safety Month** this May, Minnesota Valley Light & Power is joining with the Electrical Safety Foundation International (ESFI) to raise awareness about potential home electrical hazards and the importance of electrical safety. Electricity is a wonderful and powerful thing, but it can also be dangerous. It is important to keep fire and electrical safety tips in mind to avoid potential injuries and damage to property.

The National Fire Protection Association (NFPA) estimates 47,700 home structure fires reported to U.S. fire departments each year involve some type of electrical failure or malfunction as a factor contributing to ignition. These fires result in

418 civilian deaths, 1,570 civilian injuries, and \$1.4 billion in direct property damage.

Awareness and education are critical to reduce the incidence of electrical fires. Minnesota Valley and ESFI sponsor National Electrical Safety Month each May to educate the public in order to reduce the number of electrically related fires, fatalities, injuries and property loss. Many electrocutions and home fires can be prevented by understanding basic electrical safety principles and by taking simple precautions.

Minnesota Valley is dedicated to both personnel and public electrical safety. Safety efforts within the co-op include safety meetings by various vendors, discussions with

(continued on page 2...)

BUSINESS OFFICE • CANDICE JAENISCH

Office Manager



Plan for Tomorrow Today with Budget Billing

It looks like spring is right around the corner, but the effects of a long, cold winter linger. Playing catch up on energy bills is at best difficult for most individuals. Now is the time to consider Minnesota Valley's *Budget Billing*. The service allows you to make fixed monthly payments on your energy bill without the worry of an increase in your bill due to extremely long winters, cold temperatures or heat waves that come unexpectedly. The amount you pay is determined by an average of your last 12 months' energy bills.

Members who choose *Budget Billing* are not assessed a late fee or disconnect notice charge as long as they pay the agreed amount. Accounts are calculated in June of each year. Any balance due over the budget amount must be paid in June and credit balances will be applied to your next monthly bill. Many of our members enjoy *Budget Billing*. If fluctuating bills are a concern of yours, give it a try! Remember June is the deadline for signing up for *Budget Billing*. Please call the Business Office at 320.269.2163 for more information.

Electrical Safety Prevents Injuries and Saves Lives *(continued from page 1)*

crews, a commitment to follow proven safety patterns and participation in the National Rural Electric Cooperative Association's Rural Electric Safety Achievement Program.

Monthly newsletters covering different safety topics, safety demonstrations and the Call Before You Dig campaign are just a few of the ongoing ways Minnesota Valley encourages member safety throughout the year—we promote safety year-round. In May, since it is National Electrical Safety Month and the start of the co-op's busy season, safety ad campaigns are run with local radio stations and newspapers.

Electrical safety demonstrations geared toward third and fourth graders are offered to all schools in Minnesota Valley's service territory. "These demonstrations cover tree climbing, kite flying, working near power lines, accidents near power lines, electrical equipment in yards, substations, safety signs, conductors, insula-

tors and just about anything else you can think of," explains Minnesota Valley's Member Services Manager, Bob Walsh.

The co-op also reminds members to follow basic electrical safety precautions throughout the year. With the beautiful spring weather now here, it is important to always be aware of your surroundings outside and the possibility of downed power lines. It is impossible to tell if an electric wire is "off or on" simply by looking at it, so all wires should be treated as if they are energized and dangerous.

At work or around your home, stay safe by never using taped up power extension cords or cords with frayed ends. Check the light bulbs in light fixtures to make sure they are the correct wattage and are screwed in securely. Another important safety precaution is to never leave plugged-in appliances where they might come in contact with water.

To learn more about electrical safety at home and on the job, visit www.mnvalleyrec.com/index.php/your-co-op/safety.

Spot Your Number!

As of this writing, no one has identified their hidden number in last month's issue of the Minnesota Valley Co-op News. Keep looking each month—next time it could be your number! There are two more hidden numbers in this issue, each worth a \$20 credit on your energy account if you are participating in Operation Round Up or \$10 if you are not a participant. If you find your number in the newsletter, call the office at 320.269.2163 or 800.247.5051.



Your number may be written out in words, so look closely!



Did You Know?

The dollar entering a local economy turns over seven times.

This means that Minnesota Valley's retired capital credits of \$1.3 million in 2014 could potentially have an economic impact of over \$9.3 million to our local communities!

Comparative Report

	Jan-Mar 2014	Jan-Mar 2013	Jan-Mar 1994
Kwh Purchased	65,497,140	62,943,231	41,537,255
Kwh Sold	62,195,886	60,996,009	37,718,779
Cost Of Purchased Power	\$2,780,938	\$2,747,936	\$1,238,076
Patronage Capital Margins	\$644,631	\$437,554	\$209,169
Reserve For Taxes	\$72,928	\$75,000	\$71,665
Cost Per Kwh Purchased (mills)	42.46	43.66	29.99
	March 2014	March 2013	March 1994
Total Plant	\$62,003,293	\$60,384,143	\$15,059,143
# Of Members Receiving Service	5,258	5,244	5,143
Average Residential Bill	\$230.82	\$226.99	\$104.00
Average Residential Kwh Consumption	2,562	2,573	1,668
Average Kwh Usage All Consumers	3,577	3,675	2,043
Peak Kw Demand (Peak Load)	39,267	36,699	23,814



Manager of Engineering & Operations

Yes, the weather is now what we've been waiting for; no more cabin fever, old man winter finally moved on. Surely people are already out scratching in the fields getting some seeding done, so please be careful around power structures and overhead lines.

Our crews are building lines south of Wood Lake, close to the Redwood County line. We are also still changing out rejected power poles when time permits. Our 1,000-hour employees for the summer on the line crew in the lineman position are Jan-Eric Landmark and Mitch Christensen. I one zero eight zero one G We will once again this year have a pole treating crew composed of one supervisor, one treater and four diggers going around your system checking the condition of poles and treating salvageable ones to extend their useful life several more years.

If you have a project you plan on doing this year, let our Operations Department know about it so we can fit you in on the schedule.



Do You Know Any of These Former Minnesota Valley Members?

We need your help in locating the people listed below. Their Capital Credit dividend checks for the remainder of 2000 and 50% of 2001, have been returned to us because we do not have a current address.

- » Alltel Corporate Accounts - Little Rock, AR
- » Anderson, Allan P - Dawson, MN
- » Anderson, Steven G - Brookings, SD
- » Antony, Marvin - Clear Lake, SD
- » Baldwin, Karen J - St. Cloud, MN
- » Beard, Rene - Murdock, MN
- » Benck, Chad - Ortonville, MN
- » Besser, John - DeGraff, MN
- » Carlson, Anthony - Clarkfield, MN
- » Collins, Julia - Granite Falls, MN
- » Dekle, Robert C - El Paso, TX
- » Erickson, Jeff L - Montevideo, MN
- » Felton, Bryan - Sacred Heart, MN
- » Fier, Scott - Taunton, MN
- » Gleason, Brad - Odessa, MN
- » Govellan, Florencio - Granite Falls, MN
- » Granite Falls Venture Inc. - Eagan, MN
- » Green, Jacqueline - Dawson, MN
- » Grove, Starkey J - Elk River, MN
- » Hanson, David Wallace - Bellingham, MN
- » Haukos, Corey - Montevideo, MN
- » Heidecker, Greg - Montevideo, MN
- » Hendershot, Connie - Morris, MN
- » Hilden Farm Partnership - Marshall, MN
- » Holien, Dean - Maynard, MN
- » Holt, James D - Apache Junction, AZ
- » HPI, Attn: Peter Carlson - Brooklyn Park, MN
- » Holmgren, Dennis - Baxter, MN
- » Hunters Blind % Sam Simonson - Minneapolis, MN
- » Innovex Attn: Kari Peter - Plymouth, MN
- » Jestice, Joseph - Evansville, MN
- » Kibble, James F JR - Montevideo, MN
- » Kling, Delilah - Granite Falls, MN
- » Kroening, David & Terri - New Ulm, MN
- » Kuehn, Michael A - Taunton, MN
- » Laleman, Daniel - Minneota, MN
- » Lubrant, Mark - Granite Falls, MN
- » Mackey, Karen Kae - Milbank, SD
- » Meyers, Bill - Nisswa, MN
- » Mueller, Jeff - Dawson, MN
- » Northern PCS % Mark Aarberg - Waite Park, MN
- » Nustad, Steve - Owatonna, MN
- » Olson, Michael W - Marietta, MN
- » Panitzke, Douglas W - Renville, MN
- » Pederson, Hazel - Belview, MN
- » Price, Greg - Menno, SD
- » Redfield, Michelle - Pipestone, MN
- » Schmidt, Gary & Peggy - Boone, IA
- » Schrader, John L - Tracy, MN
- » Sheppard, Douglas - Granite Falls, MN
- » Speaks, David - Maynard, MN
- » Streed, David - Montgomery, MN
- » Swenson, Jerome - Fergus Falls, MN
- » Tharaldson, Greg - Watson, MN
- » Walstrom, Jana - Fairfax, MN
- » Wagner, Greg - Granite Falls, MN
- » Walter, Lachelle Rena - Paynesville, MN
- » West, Michael - Clarkfield, MN
- » Malone, Sean & Meaghan - Louisburg, MN

If you have the address of any of these people or one of their heirs, please call us at 320.269.2163 or 800.247.5051, email us at mnvalley@mnvalleyrec.com, or mail us at Minnesota Valley R.E.C., P.O. Box 248, Montevideo, MN 56265. Thanks for your help!



Energy Saving Tip

Changing to low flow shower heads can save you 40% to 60% of the annual water heating costs for showering. That could be over \$100 for the typical home each year. These savings could easily pay for the cost of new shower heads in less than one year. To see if you can save money, do the milk carton test. Hold an empty half-gallon milk carton under your shower head, and time how long it takes to fill it. If it takes 10 seconds or less, your shower could use an energy efficient shower head.

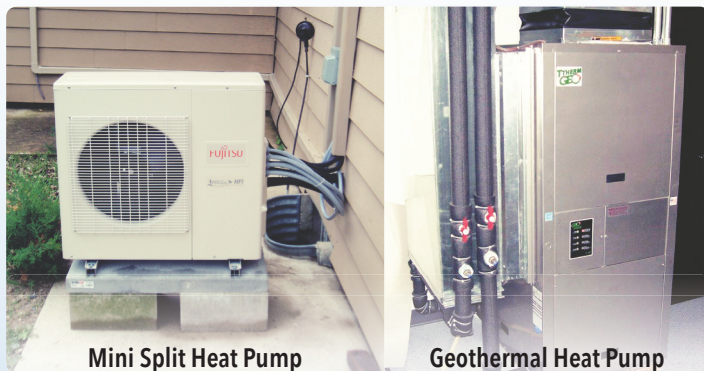




Double Value Days

Recently we have visited about the main reasons why you should put in a heat pump. Those reasons were higher efficiencies, attractive heat rates and low interest financing. Well, from now through all of this summer, we will *DOUBLE* the rebates given for the installation of an air to air heat pump or a geothermal heat pump. That makes an already attractive heating system look that much better. These rebates will run from May 1st, 2014 through September 22nd, 2014. The system needs to be a new installation and placed in service between the dates stated above. Certain size limitations apply. This gives you all summer to take advantage of all the great benefits of a heat pump system, along with the double rebate offer. Don't let this great offer slip away!

We are here to help you with some of the questions that you may have. Sometimes shopping for something new can be a bit intimidating. The Member Services Department is here to help you with any of the questions you may have.



Mini Split Heat Pump

Geothermal Heat Pump

Good luck in your heat pump shopping, and as always, please contact the Member Services Department at 320.269.2163 or 800.247.5051 for more information.

Facts About Heat Pumps

Applications

- ❖ The applications for heat pumps are endless. Just about any place you need heat, you can use a heat pump to do it.

Initial Cost

- ❖ Generally, a heat pump will cost more when compared to the cost of a furnace or an air conditioner individually, but a heat pump serves for both cooling and heating. Usually, the added equipment cost is easily offset by the added benefits received by a heat pump system.

Operating Costs

- ❖ The operating costs of a heat pump and an air conditioner are similar during the summer months, but the energy and cost savings will occur during the winter heating season. Geothermal heat pumps can attain an even higher annual fuel cost savings than what an air source heat pump can do.

Size of Heat Pump

- ❖ Heat pumps must be sized and installed appropriately for them to function efficiently. C three thirty-six zero two Heat pumps are sized according to cooling or heating demand. Contact a heating and cooling professional to help with your sizing needs.

Heat Pump Efficiency

- ❖ Efficiencies of heat pumps can be much better than a traditional heating system, with the geothermal heat pump able to reach efficiencies of up to 500%.

Summer Double Rebate Days

Don't forget to take advantage of Summer Double Rebate Days by installing a new air source heat pump or geothermal heat pump between May 1st and September 22nd!

Address

501 South 1st Street
P.O. Box 248
Montevideo, MN 56265

Office Hours

8:00 a.m. - 4:30 p.m.
Monday through Friday

Minnesota Valley Co-op News

Published monthly by:
Minnesota Valley Cooperative
Light and Power Association

24-Hour Telephone

Answering
320.269.2163
800.247.5051

Website

www.mnvalleyrec.com

